

LEVEL
20

Associate Membership

Contents

01/ Introduction to Level 20

02/ Associate Membership

03/ How to get involved

01

Introduction to Level 20

About Level 20

Level 20 is a not-for-profit organisation founded in 2015 with the aim of improving the representation of women at senior levels in the private equity industry.

OUR MISSION

> To **inspire** women to **join and succeed** in private equity, and to **work with industry leaders** to **make the changes necessary** for all to flourish.

OUR FOCUS

> We believe that for women to hold more than 20% of senior roles, the industry must focus on **attracting, retaining and promoting** women.

20%
TARGET

OUR GOAL

> Our recent research (2023) reveals **15% of senior investment roles** in the UK are held by women, and it is **14% across Europe (2024)**. Our ambition is to increase that number to at least 20%.

7,000+
MEMBERS

OUR NETWORK

> Our network encompasses **our members** in **13 chapters** and **globally**, who benefit from our programmes, **our sponsors**, like your firm, who we work with to effect change in the industry, alongside others like **industry bodies and other non-profits and organisations**.

Five Pillars of Activity

Our mission is underpinned by five key initiatives

- Mentoring
- Networking & development events
- Research
- Outreach & internships
- Advocacy & industry support



Find out more
on our website: level20.org

The Aims of Level 20 Outreach

Insights

Educate women early in their career planning about the opportunities in the industry

Access

Break down barriers and demystify entry into the industry

Experiences

Provide experiential opportunities to learn about private equity

Level 20 across Europe

Our activities happen across many markets

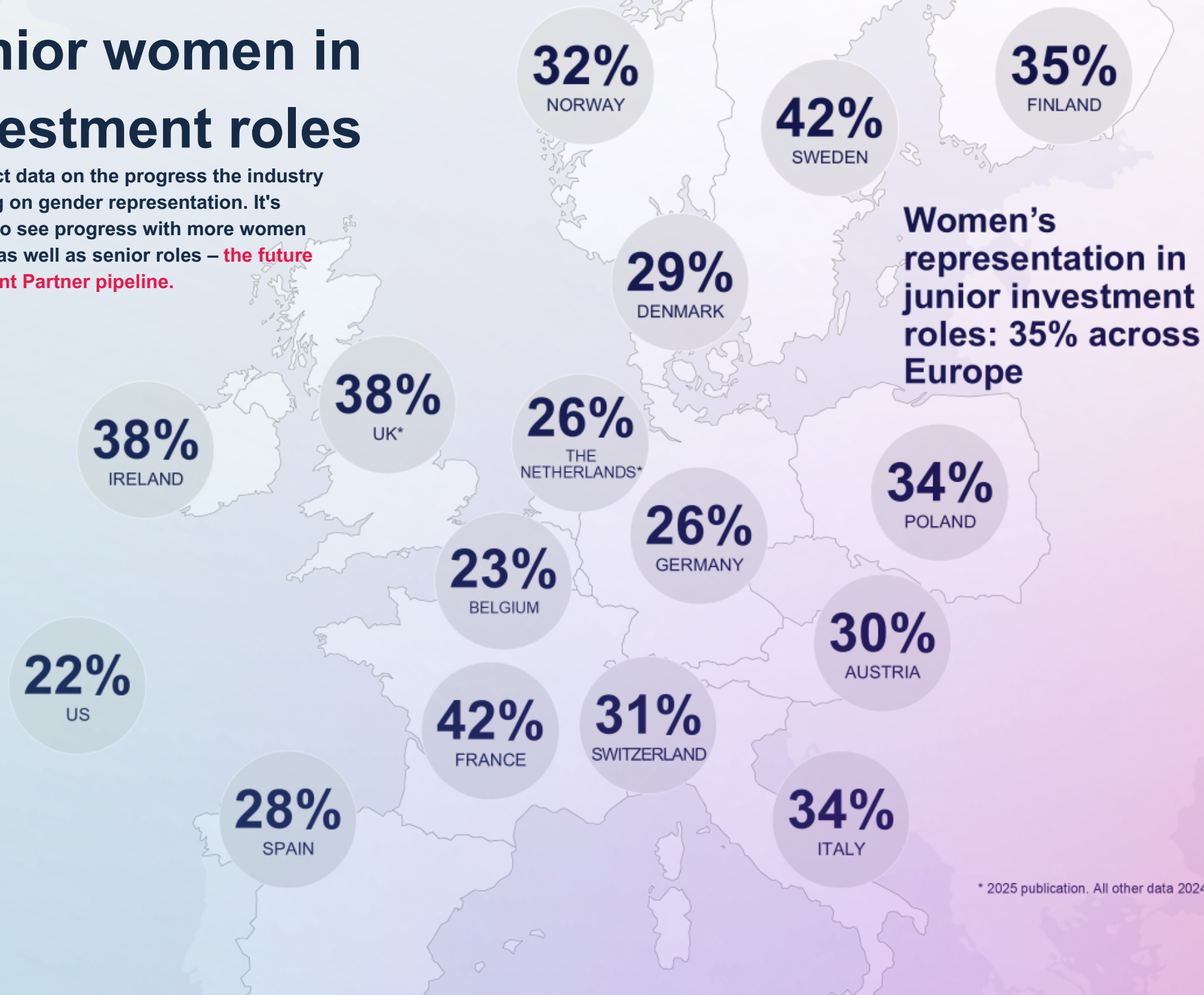
- Belgium
- CEE (Central and Eastern Europe)
- DACH(Germany, Austria, Switzerland)
- Denmark
- Finland
- France
- Ireland
- Italy
- Netherlands
- Norway
- Spain
- Sweden
- UK

We also have US and Global chapters for online events



Junior women in investment roles

We collect data on the progress the industry is making on gender representation. It's exciting to see progress with more women in junior as well as senior roles – **the future Investment Partner pipeline.**



02

Associate Membership

Level 20 Membership

While our primary focus is on professionals currently working in private equity, Level 20 also engages in outreach activities aimed at recent graduates and junior professionals to inspire and educate about careers in the industry. You can join as a member in our associate category for free.

Associate Membership

Junior professionals interested in pursuing a career in private equity can join Level 20 and participate in the outreach program. Our associate membership is a very broad category, a segment of which is made up of career starters working in adjacent industries such as investment banking, consulting, science and engineering etc. and are interested in making a change to a PE Career in the future.

Benefits of Associate Membership

Membership is free and comes with multiple benefits.



Internships,
insight days
and PE
Academies*



Access to
events &
networking



Access to the
member portal
and skills
development
resources



Monthly
newsletter

* activities depending on chapter

Access to the Member Portal

Recent Member resources:

Our Member Portal also includes key news and announcement including:

- Exclusive Level event invitations
- Access to events that full members see - webinars
- Level 20 in the news
- Notification of key awards nominations
- Announcement of key Level 20 initiatives including our mentoring launch, request for speakers and how to get involved

The screenshot displays the Level 20 Member Portal interface. At the top, it identifies the user as a 'Member Since 2022 - Full Member - UK Chapter' and shows the 'LEVEL 20' logo. The navigation bar includes 'Home', 'News', 'Resources', 'Events', and 'Your Profile', along with a search bar for 'Level 20'.

The main content area features an 'EVENT' section with an invitation to join: 'Level 20 Future Leaders: Navigating Family Leave & Returning to Work' on 28 Jan 2025 from 8:00 AM to 9:30 AM GMT, held 'In Person'. Buttons for 'Register' and 'View Details' are provided.

Below the event, there are sections for 'LATEST NEWS' and 'LATEST RESOURCES'. The news section highlights 'Alina Addison: The Audacity Spectrum | Level 20 Discount Code'. The resources section features 'Level 20 UK Mentee Workshop - Being Heard with Cat Kipling'. To the right, 'TOP LEVEL 20 TAGS' include Level 20, Role Models, Interviews, Video, Networking, Post Event, Diversity, Mentoring, Panel Discussion, Inspiring Women, Personal Development, and Webinar.

The lower portion of the screenshot shows the 'Resources' section, which includes a search bar and a filter by resource type. The filters are: External Reports (0), External Videos (0), Inspiring Women (0), Level 20 Talks (0), Mentoring (0), Post Events (0), Presentations (0), Webinars (0), and Level 20 Research (0). Below the filters, there are search results for 'Level 20 Research', including 'Level 20 2024 Annual Review' and 'Level 20 Family Leave report reading guide'.

The private equity interview process

The multi-stage interview and application process for entry into private equity can be a barrier. Working in collaboration with search firm partners and sponsor firms, Level 20 runs interview skills workshops and CV preparation sessions to demystify the process.

Topics covered include LBO modelling, approaching case studies and interview tips.



The most valuable takeaways were the interview advice, some of the key transferable skills e.g. attention to detail and curiosity. I had interesting conversations that made me think about different perspectives I had not previously considered.

**Participant in Level 20 Speed Networking
for junior professionals**

Access to Events and Networking

We plan a mix of events (in-person and digitally) across the year:

Recent past-events include:

- **Commercial Case Study** workshop with Clayton Dubilier & Rice.
- Dartmouth Partners and Exponent **Interview Preparation** workshop.
- **Speed Networking** with Investment Professionals.
- All-member webinar with White & Case: **Changes to Fund Structuring Landscape in Europe**
- **Career Insights** Panel Discussions.
- Dartmouth Partners and Exponent **LBO Modelling** workshop.
- All-member Webinar 'Empower your voice: **Advocacy and Assertiveness Masterclass**'

And lots more!



Annual Review 2024

Level 20's 2024 annual review showcases our impact and reach across Europe and beyond.

- There were **35 outreach events across Europe**, including speed networking for early career professionals, insights into the market and networking events, and interview prep and case study workshops.
- Level 20 France worked with France Invest to visit several **universities and business schools** across France, including the Sorbonne, Grenoble Business School, ESSEC Business School, Toulouse Business School and ESCP Business School.
- Student sessions in the **UK** included panel events at Cambridge Judge and London Business School.
- WHU University, Germany, and the University of St Gallen, Switzerland, worked with Level 20 DACH.
- PE Academies and Insight Days were held in the Netherlands and CEE, with topics including the due diligence process and selection of investment projects, ESG and non-financial reporting, venture investing, building portfolio value and a career in private equity.



There were interesting conversations that made me consider different perspectives. Valuable takeaways for me included interview advice, and some of the key transferable skills e.g. attention to detail and curiosity.

Early career attendee
Speed networking event





We look forward to welcoming you as a member

Help accelerate the momentum
Join us here

